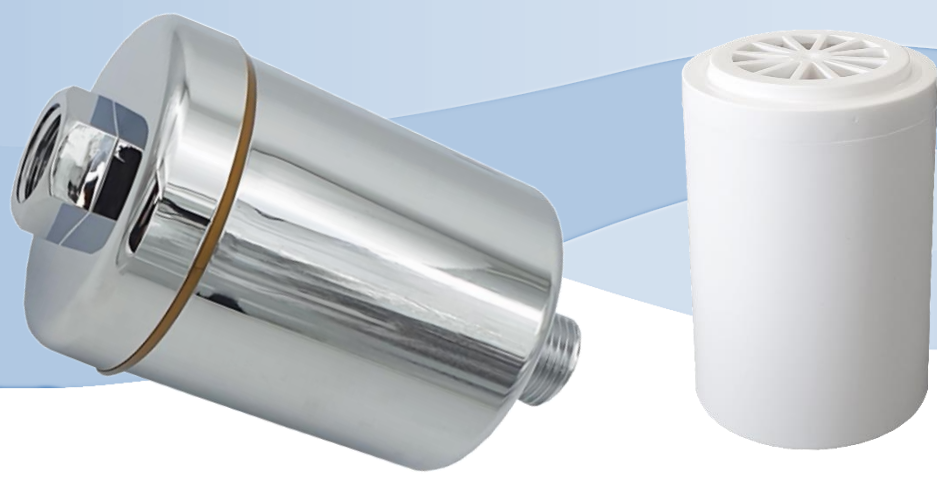


# SHOWER FILTER



## SPECIFICATIONS

Connection	1/2" M & F
Max temp	80°C
Max pressure	100 psi
Dimensions	99 x 70 cm
Service life	4 months (cartridge) 12 months (whole unit)



## CONTENTS



Anisotropic Ferrite Magnet



Carbon



Calcium Sulphite

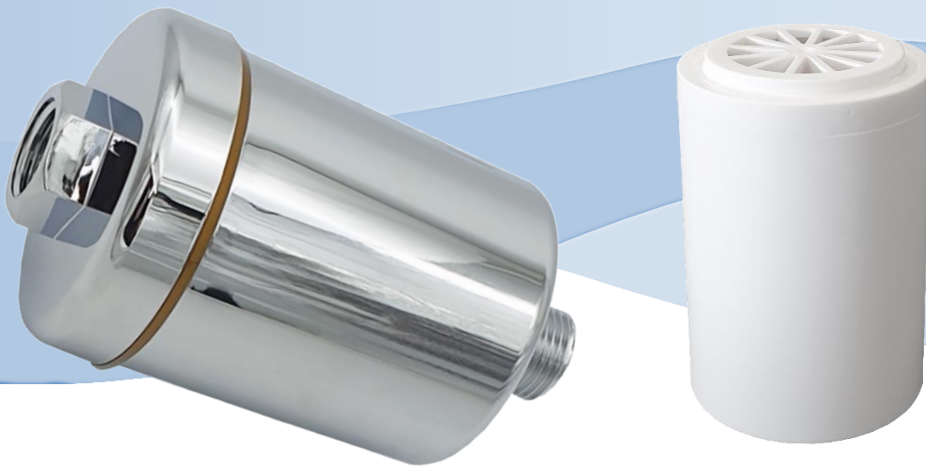


Ceramic Ball



KDF





## INSTALLATION

1. Before installation, 'flush' your filter by running water from a tap through both ends. This should flush any carbon fines and will avoid blocking your shower head.
2. Assess the best place to install your shower filter. The closer to the wall the better.
3. The filter needs to be connected to an existing ½" connection in the direction shown on the diagram.
4. Unscrew the connection where you intend to install the filter. You should be able to do this by hand but if not, use a wrench with a towel to prevent damage

Newer shower filters should have an internal washer. In this case Teflon tape is not necessary. If you do not have internal washers, you may need 6-10 wraps of white Teflon Tape for a good seal.

**NB** – Too many wraps could put excessive stress on the casing. The less wraps the better

The shower filter comes with an internal rubber washer on the female side so it should not be necessary to apply Teflon Tape to this side.

5. Screw both ends onto your shower connections ensuring the correct flow direction through the filter. **DO NOT OVER TIGHTEN.**

## CARTRIDGE REPLACEMENT

1. Unscrew the connections on the inlet and outlet of the filter.
2. Unscrew the top of the casing and remove the old cartridge.
3. Replace the internal O-Ring (larger) in the casing with the one provided with the cartridge. Ensure the O-ring is positioned correctly in the groove.
4. Place the O-ring (smaller) on the top of your new cartridge.
5. Insert the new cartridge – with the O-ring at the top and screw the casing firmly together. Do not overtighten.
6. 'Flush' your filter by running water from a tap through both ends.
7. If Teflon Tape was used for installation, remove any old Tape from the threads and re-apply.
8. Screw both ends onto your shower connections ensuring the correct flow direction through the filter. **DO NOT OVER TIGHTEN.**

**NB** – Ensure you replace the cartridge every 4months or if you feel a drop in water pressure and whole shower filter every 12 months.

**Water saving shower heads** – Not recommended

**Mains pressure limiting valve** – Highly recommended