



UM -1 - 10 - AC220 - 10

Model

ON/OFF(standard)

Voltage

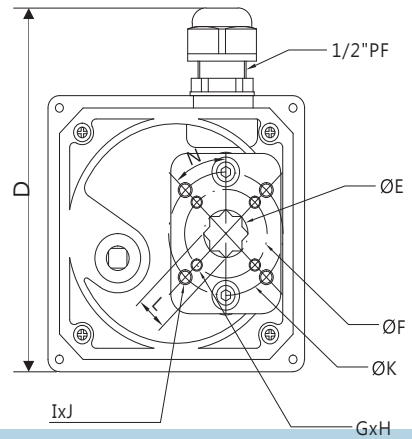
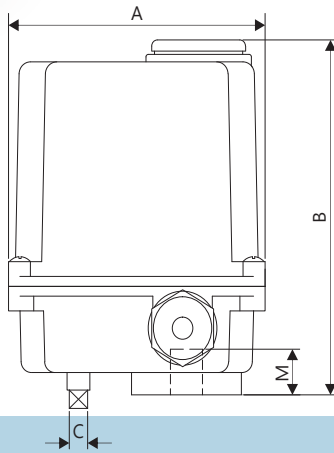
AC220V(50/60)Hz

Speed 90
sec(60Hz)

AC : 10sec (standard)

Power

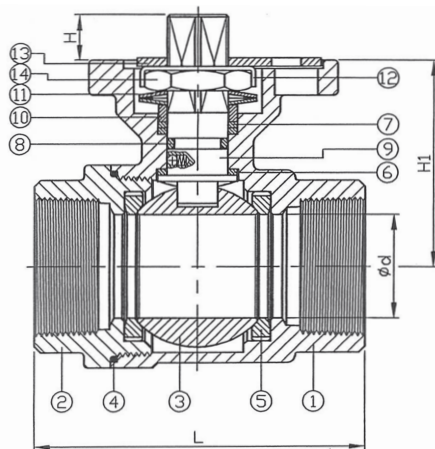
AC : 10W



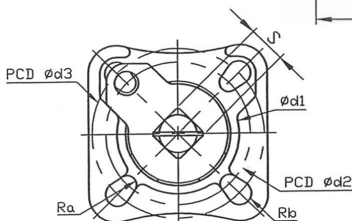
mm

Model	A	B	C	D	E	F	G	H	I	J	K	L Max	M	N	ISO 5211
UM-1	118	145	8	140	19.3	36	M5	4	M6	4	50	14.03	19	45°	F03 / F05

2-PC Screwed End Ball Valve



ITEM	PARTS	MATERIAL
1	BODY	ASTM A351-CF8M
2	CAP	
3	BALL	PTFE
4	BODY SEAL	
5	BALL SEAT	RTFE
6	THRUST WASHER	PTFE
7	PACKING	
8	O-RING	VITON
9	STEM	ASTM A276-316
10	GLAND RING	AISI 304
11	BELLEVILLE WASHER	AISI 301
12	LOCK WASHER	AISI 304
13	STOPPER	
14	STEM NUT	



1/2"~1-1/4"

NPS	d	L	H	H1	S	d1	d2	d3	Ra	Rb	Weight (lb)	Torque (in-lb)
1/2"	0.59	2.28	0.31	1.43	0.35	1.22	1.42	1.65	0.11	0.11	0.8	48.7
3/4"	0.79	2.58	0.35	1.54	0.35	1.22	1.42	1.65	0.11	0.11	1	66.4
1"	0.98	3.1	0.43	1.92	0.43	1.4	1.65	1.97	0.11	0.14	1.8	97.4
1-1/4"	1.26	3.54	0.43	2.13	0.43	1.4	1.65	1.97	0.11	0.14	2.7	132.8
1-1/2"	1.5	4.13	0.45	2.59	0.55	2.2	1.97	2.76	0.14	0.18	4.4	177
2"	1.97	4.88	0.45	2.97	0.55	2.2	1.97	2.76	0.14	0.18	6.4	354

unit : in