

TRI-SET

SELECTABLE PRESSURE LIMITING VALVE



**ONE VALVE
WITH THREE
PRESSURE
SETTINGS**

Patent No.: 201305201

AVG

Australian Valve Group
www.avg.net.au

TRI-SET SELECTABLE PRESSURE LIMITING VALVE

TRI-SET SELECTABLE PRESSURE LIMITING VALVE, PLV

The "TRI-SET" range is available in 15mm and 20mm compression and 15mm and 20mm female connections which incorporate three selectable pressure settings within the one compact valve, 350, 500 and 600kPa.

The valve is manufactured from durable DR brass and the internal waterways have been engineered to give optimum flow characteristics.



The "TRI-SET" selectable pressure limiting valve comes preset at 500 kPa.

By turning the Allen key provided the valve can be adjusted to 600kPa (clockwise) and 350kPa (anti-clockwise). The adjustment screw will locate onto a shoulder when in the correct position and the pressure setting can visually be determined by the alignment of the set position mark and the values on the adjustment screw.

Provided with the "TRI-SET" selectable pressure limiting valve are three coloured plastic clips which indicate the valve's pressure setting. The pre set valve comes with a white clip fitted to indicate that the valve is set to 500 kPa. The yellow clip provided should be fitted if the valve is set to 350kPa and the blue clip fitted if the valve is set to 600kPa.



FEMALE

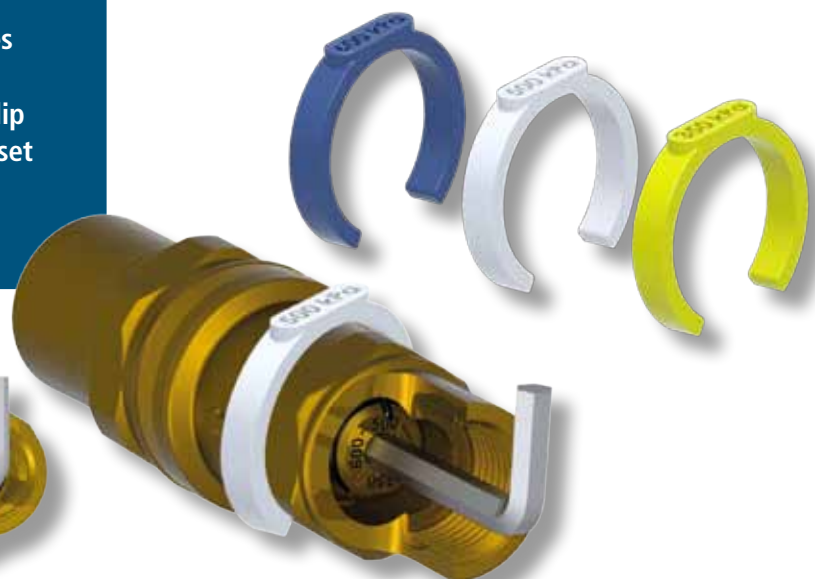


COMPRESSION



FEATURES AND BENEFITS

- One valve three pressure settings
- Available in female and compression connections with three pressure settings
- Valves can be installed in suitable approved box in the ground
- No vent hole design
- Suitable for enclosed spaces, cupboards & under sinks
- Reduced Inventory – 4 TRISET valves now replace 12 fixed PLV's
- Dezincification resistant brass
- Suitable for vertical and horizontal installation
- Suitable for a wide variety of pressure limiting applications
- Complies with AS1357.2



TRI-SET SELECTABLE PRESSURE LIMITING VALVE

TR-SET SELECTABLE PRESSURE LIMITING VALVE

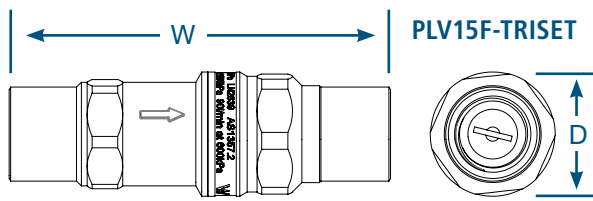
PRODUCT RANGE

PLV15F-TRISET	15mm F x F	adjustable 350, 500, 600 kPa
PLV15C-TRISET	15mm C x C	adjustable 350, 500, 600 kPa
PLV20F-TRISET	20mm F x F	adjustable 350, 500, 600 kPa
PLV20C-TRISET	20mm C x C	adjustable 350, 500, 600 kPa

ONE VALVE WITH THREE PRESSURE SETTINGS

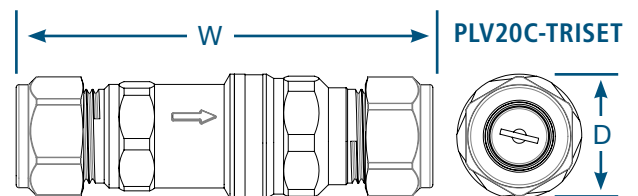
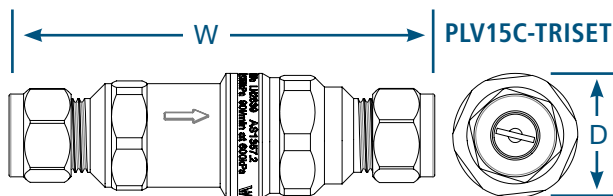
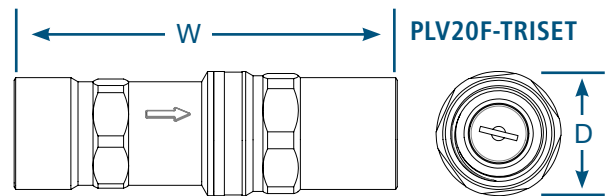
DIMENSIONS

	W	D
PLV15F-TRISET	107mm	35mm
PLV15C-TRISET	122mm	35mm



DIMENSIONS

	W	D
PLV20F-TRISET	121mm	35mm
PLV20C-TRISET	122mm	35mm

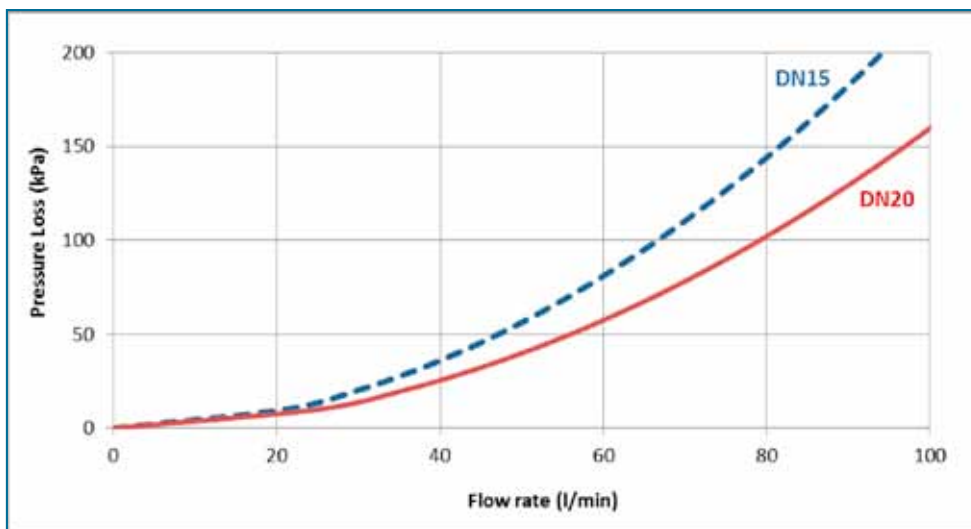
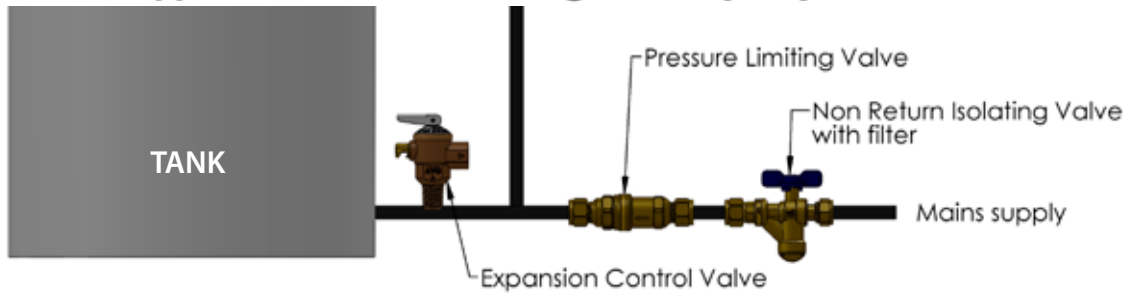


SPECIFICATIONS

Valve body	DZR brass
Internal cartridge	DZR brass
Valve seat	316 Stainless steel
Pressure spring	Stainless steel
" O " rings	EPDM
Max. Inlet Pressure	1800 kPa
Max. Operating Temp	80°C
Selectable Pressure Settings	350 kPa, 500kPa and 600kPa. Supplied factory pre - set at 500kPa
Approvals	AS 1357.2 WATERMARK LIC NO. 2639 Must be installed by a licensed Plumber as per the manufacturers instructions

TR-SET SELECTABLE PRESSURE LIMITING VALVE

Typical Pressure Limiting Valve (PLV) Installation



2 YEAR WARRANTY

NOTE: THE MANUFACTURE DATE IS STAMPED / MARKED ON THE VALVE

Valves are factory set and cannot be field serviced.

The warranty is VOID if the valve has not been installed as per these instructions, or the valve has been tampered with abused, or installed in harsh water conditions.

All warranty claims must be accompanied with a written confirmation of the fault, the complete faulty valve, date of installation, installation address and installers detail before the warranty claim can be processed.

AVG valves must be installed by a licensed plumber in accordance with AS/NZS 3500, the building code and any local requirements.

FLOW RATE - Litres per minute (LPM)

	15MM	20MM
350 kPa	50 LPM	95 LPM
500 kPa	80 LPM	120 LPM
600 kPa	90 LPM	130 LPM

WHEN TESTED IN ACCORDANCE WITH AS1357.2

IMPORTANT NOTE: FLUSH ALL PIPEWORK BEFORE INSTALLING THE VALVE

Valves must be installed in an accessible position to allow for service or replacement.

Valves must not be buried directly in the ground. Valves can be installed in a suitable approved box in the ground.

All valves must be installed as per directional arrows.

Do not expose valves to naked flames or excessive heat as this may damage internal components.

