

961-200-24



SPECIFICATIONS

200GPD 24V Auto Flush

Approx permeate flow	0.03 m ³ /hr *
Min inlet pressure	30 psi
Approx recovery	28% *

**Based on membrane manufacturers recommendations*

Rejection	90% (based on 15% recovery)
Pump	2 x AquaPro PMAP6689-100 GPD
Membranes	2 x TW30-1812-100HR Filmtec
Prefilters	20" x 2.5" 1 x 5 mic Sediment 1 x 10 mic Carbon 1 x 1 mic Sediment
Connections	3/4" in/out

FEATURES

- Auto flush control
- Anti-scale inline filter
 - 3/8" Solenoid
- High & low pressure switch
- Ideal for window washing, combi ovens etc

AQUA PRO

CrystalClear
PURIFICATION SYSTEMS PTY LTD



Product Data Sheet

FilmTec™ TW30-1812-100HR Element

Description

FilmTec™ Residential Elements are some of the most reliable, consistent and highest quality in the industry. Our 100 GPD elements offer a superior balance of the highest available flow with premium rejection, ideal for low feed pressure residential applications.

FilmTec™ Residential Elements feature:

- New advanced membrane chemistry can achieve stabilized salt rejection of 98%.
- High active membrane area and twin leaf design for optimized performance
- NSF58 safety Certification and reduced certification costs / resources with NSF data transfer Certification
- Fully-automated manufacturing that ensures consistent and high quality elements
- Dry shipping for convenient handling and longer shelf-life
- Proven consistency and reliability for longer membrane life

Product Type

Spiral-wound element with polyamide thin-film composite membrane

Typical Properties

FilmTec™ Element	Applied Pressure		Permeate Flow Rate		Typical Stabilized Salt Rejection (%)
	(psig)	(bar)	(GPD)	(l/h)	
TW30-1812-100HR	50	3.4	100	15.8	98

1. Permeate flow and salt rejection based on the following test conditions: 250 ppm softened tap water, 77°F (25°C), 15% recovery and the specified applied pressure.
2. Minimum salt rejection is 96.0%.
3. Permeate flows for individual elements may vary $\pm 20\%$.

Element Dimensions



COMPONENT

This component is Tested and Certified by NSF International against NSF/ANSI Standard 55 for material requirements only.

	A		B		C		D		E	
FilmTec™ Element	(in.)	(mm)	(in.)	(mm)	(in.)	(mm)	(in.)	(mm)	(in.)	(mm)
TW30-1812-100HR	11.74	298	0.875	22.2	0.68	17	1.75	44.5	9.4	239

TW30-1812 Home Drinking Water elements seal at a standard 2.0 Inch – 2.05 Inch I.D. within pressure vessels

FilmTec™ Membranes

Residential Reverse Osmosis Elements

Influence of temperature and pressure on permeate flow

Figure 1: Impact of pressure on permeate flow
(constant temperature, recovery)

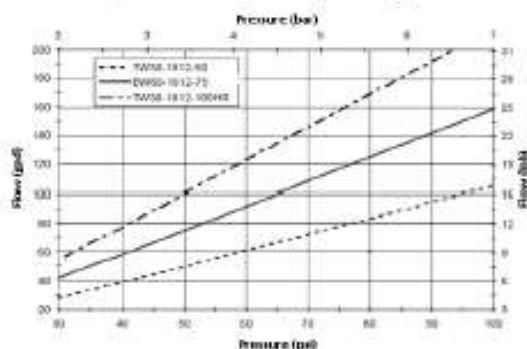
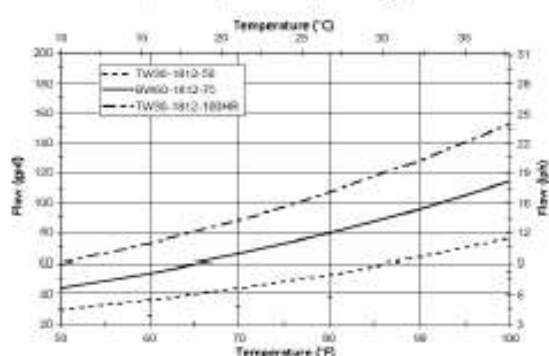


Figure 2: Impact of temperature on permeate flow
(constant pressure, recovery)



Operating and Cleaning Limits

Maximum Operating Temperature ^a	113°F (45°C)
Maximum Operating Pressure	150 psig (10 bar)
Maximum Feed Flow Rate	2.0 gpm (7.6 lpm)
pH Range, Continuous Operation ^a	2 – 11
Maximum Feed Silt Density Index (SDI)	SDI 5
Free Chlorine Tolerance ^b	<0.1 ppm

- Maximum temperature for continuous operation above pH 10 is 95°F (35°C).
- Under certain conditions, the presence of free chlorine and other oxidizing agents will cause premature membrane failure. Since oxidation damage is not covered under warranty, DuPont Water Solutions recommends removing residual free chlorine by pretreatment prior to membrane exposure. Please refer to [Dechlorinating Feedwater](#) (Form No. 45-D01569-en) for more information.

Additional Important Information

- It is recommended that systems using these elements rinse the elements for 24 hours, prior to first use, to meet NSF/ANSI 58 Standard.
- The first full tank of permeate must be discarded. Do not use this initial permeate for drinking water or food preparation.
- To ease installation, it is recommended to use a lubricant safe for indirect water contact on all seals. Potential options include water, glycerin based lubricants, and MOLYKOTE® 111 Compound.
- Rotate the element about a quarter turn to ease installation and removal of the element. Ensure good interface between the o-rings and brine seal with their connection surfaces.
- Keep elements moist at all times after initial wetting.
- To prevent biological growth during prolonged system shutdowns, it is recommended that membrane elements be immersed in a preservative solution. Rinse out the preservative before use.
- The membrane shows some resistance to short-term attack by chlorine (hypochlorite). Continuous exposure, however, may damage the membrane and should be avoided.
- FilmTec™ Home Drinking Water Reverse Osmosis Elements may be covered under the FilmTec™ Reverse Osmosis and Nanofiltration Three-Year Prorated Limited Warranty (Form No. 45-D00903-en) extended to OEMs. Such Limited Warranty is non-transferable. Contact a DuPont representative for more information.

If operating limits and guidelines given in this Product Information Bulletin are not strictly followed, the Limited Warranty will be null and void. The OEM is fully responsible for the effects of incompatible chemicals and lubricants on elements. Use of any such chemicals or lubricants will void the Limited Warranty.

Product Stewardship

DuPont has a fundamental concern for all who make, distribute, and use its products, and for the environment in which we live. This concern is the basis for our product stewardship philosophy by which we assess the safety, health, and environmental information on our products and then take appropriate steps to protect employee and public health and our environment. The success of our product stewardship program rests with each and every individual involved with DuPont products—from the initial concept and research, to manufacture, use, sale, disposal, and recycle of each product.

Customer Notice

DuPont strongly encourages its customers to review both their manufacturing processes and their applications of DuPont products from the standpoint of human health and environmental quality to ensure that DuPont products are not used in ways for which they are not intended or tested. DuPont personnel are available to answer your questions and to provide reasonable technical support. DuPont product literature, including safety data sheets, should be consulted prior to use of DuPont products. Current safety data sheets are available from DuPont.

Please be aware of the following:

- The use of this product in and of itself does not necessarily guarantee the removal of cysts and pathogens from water. Effective cyst and pathogen reduction is dependent on the complete system design and on the operation and maintenance of the system.
- Permeate obtained from the first hour of operation should be discarded.

Regulatory Note

This product may be subject to drinking water application restrictions in some countries; please check the application status before use and sale.

It is recommended that systems using these elements rinse the elements for 24 hours, prior to first use, to meet NSF/ANSI 58 Standard.

Have a question? Contact us at:

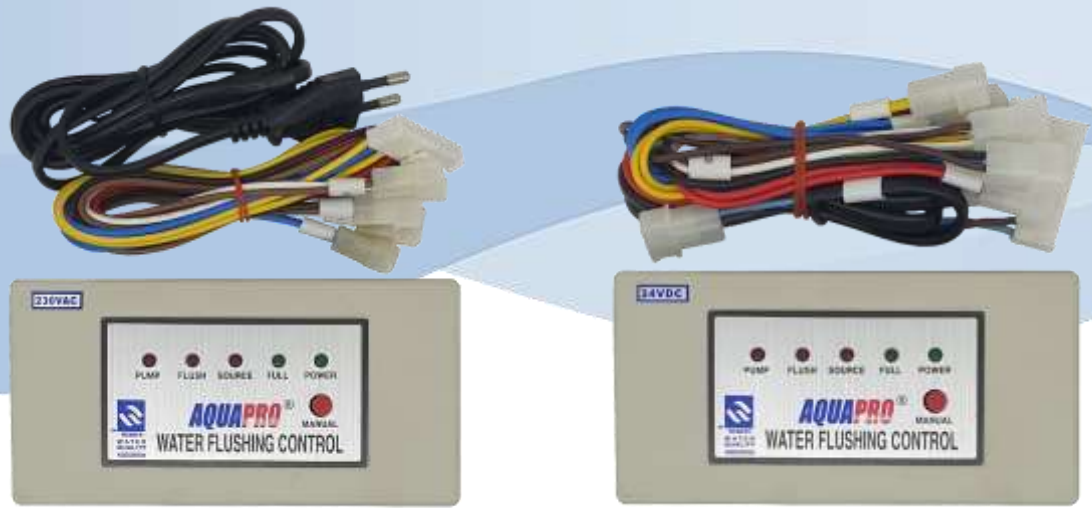
www.dupont.com/water/contact-us

All information set forth herein is for informational purposes only. This information is general information and may differ from that based on actual conditions. Customer is responsible for determining whether products and the information in this document are appropriate for Customer's use and for ensuring that Customer's workplace and disposal practices are in compliance with applicable laws and other government enactments. The product shown in this literature may not be available for sale and/or available in all geographies where DuPont is represented. The claims made may not have been approved for use in all countries. Please note that physical properties may vary depending on certain conditions and while operating conditions stated in this document are intended to lengthen product lifespan and/or improve product performance, it will ultimately depend on actual circumstances and is in no event a guarantee of achieving any specific results. DuPont assumes no obligation or liability for the information in this document. References to "DuPont" or the "Company" mean the DuPont legal entity selling the products to Customer unless otherwise expressly noted. NO WARRANTIES ARE GIVEN; ALL IMPLIED WARRANTIES OF MERCHANTABILITY OR FITNESS FOR A PARTICULAR PURPOSE ARE EXPRESSLY EXCLUDED. No freedom from infringement of any patent or trademark owned by DuPont or others is to be inferred.

© 2021 DuPont. DuPont™, the DuPont Oval Logo, and all trademarks and service marks denoted with ™, ℠ or ® are owned by affiliates of DuPont de Nemours Inc., unless otherwise noted.



AUTO FLUSH CONTROL BOX



Functions

- Automatically flush for 90 seconds when the machine is turned on
- Water generating detection – Automatically flush for 90 seconds after the accumulated time reaches 12 hours
- If manual flushing is necessary, activate Manual Flush function and the machine will automatically flush for 90 seconds
- Input water detection – It will not start the control system (stop pump/solenoid valve) if the low pressure switch has a delay of 5 seconds (out of source water)
- Output water detection – When water produced reaches full capacity, Full water lamp is on and stops the pump/solenoid valve
- Full water status – can still operate flushing function by pressing the manual button
- Every water generating start will start solenoid valve 4 – 5 seconds prior to pump
- Every full water status will shut off pump 4 – 5 seconds prior to solenoid valve

LAMP INDICATIONS

PUMP	Water generating will be on when pump is generating
FLUSH	Auto flush function will be on when it is flushing automatically
SOURCE	Water input will be on when it is short of water
FULL	Full water will be on when water tank is full
POWER	Will always be on
MANUAL	Manual flush function will be on when flushing manually

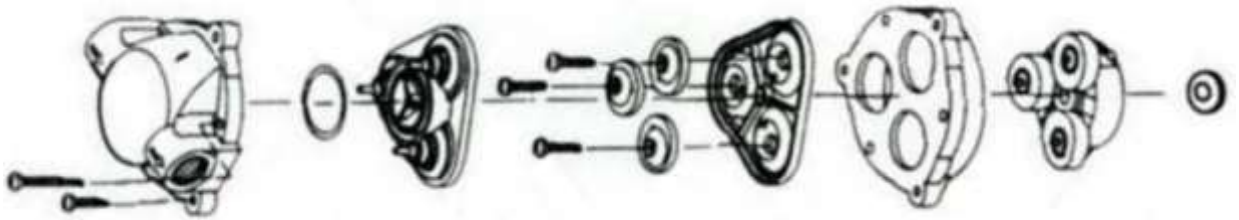
WIRING INSTRUCTIONS

Low pressure switch	YELLOW with AMP connector
Floating/Pressure switch	BLUE with AMP male connector
Flushing solenoid valve	RED with AMP connector
Booster pump (Electromagnetic switch)	BROWN/BLACK with AMP connector
Inlet solenoid valve	BROWN/WHITE with AMP connector
Power	BLUE/BROWN line with plug

SPECIFICATIONS

Model	MC2
	6 light microprocessor automatic flush controller
Power	110/230V AC
	24V DC
	50/60Hz

RO BOOSTER PUMP



SPECIFICATION

Pump	3 chamber diaphragm pump
Bypass	120 psi
Voltage	24V DC
Pressure switch	None
Working temp	5 - 52°C
Prime	Self-priming
Ports	3/8" F NPT
Duty cycle	Continuous

MOTOR

Voltage/Frequency	24V DC
No-load power	5.4W Max
No-load current	0.2A Max
Motor speed	650 rpm \pm 5%
Withstand voltage test	DC/500V/1 sec/3 mA

PRESSURE PERFORMANCE

Pressure	Flow
40 psi	1470 ml/min
60 psi	1340 ml/min
80 psi	1150 ml/min
100 psi	960 ml/min
120 psi	790 ml/min

MATERIAL

Plastic	Nylon
Valves	EPDM
Diaphragm	Santoprene
Fasteners	Zinc or Cadmium plated steel