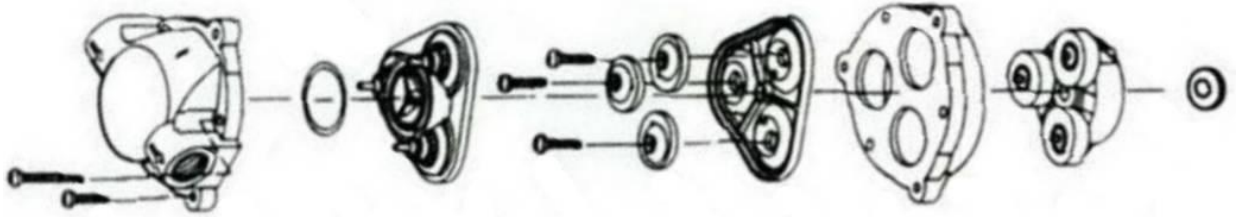


RO BOOSTER PUMP



SPECIFICATION

| | |
|-----------------|--------------------------|
| Pump | 3 chamber diaphragm pump |
| Bypass | 120 psi |
| Voltage | 24V DC |
| Pressure switch | None |
| Working temp | 5 - 52°C |
| Prime | Self-priming |
| Ports | 3/8" F NPT |
| Duty cycle | Continuous |

MOTOR

| | |
|------------------------|--------------------|
| Voltage/Frequency | 24V DC |
| No-load power | 5.4W Max |
| No-load current | 0.2A Max |
| Motor speed | 650 rpm \pm 5% |
| Withstand voltage test | DC/500V/1 sec/3 mA |

PRESSURE PERFORMANCE

| Pressure | Flow |
|----------|-------------|
| 40 psi | 1470 ml/min |
| 60 psi | 1340 ml/min |
| 80 psi | 1150 ml/min |
| 100 psi | 960 ml/min |
| 120 psi | 790 ml/min |

MATERIAL

| | |
|-----------|---------------------------------|
| Plastic | Nylon |
| Valves | EPDM |
| Diaphragm | Santoprene |
| Fasteners | Zinc or Cadmium plated steel |